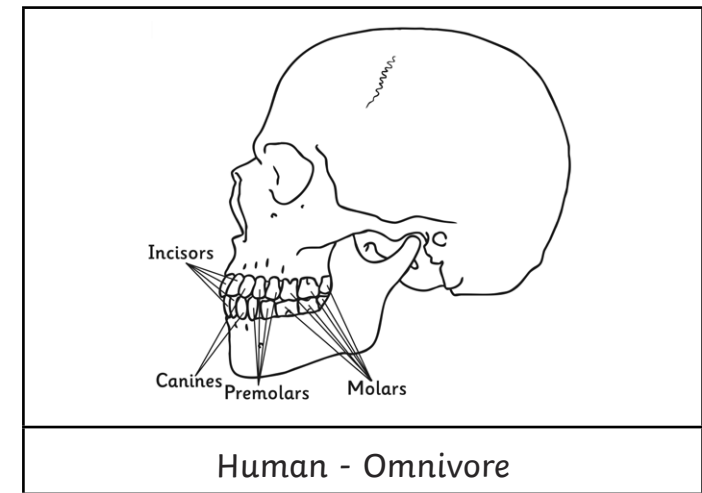
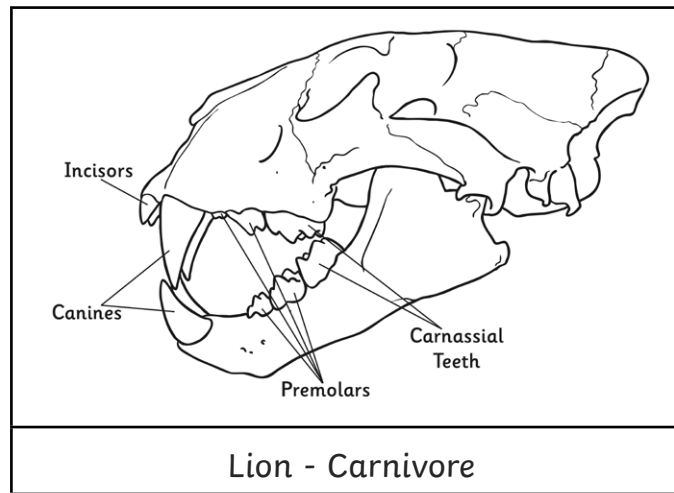
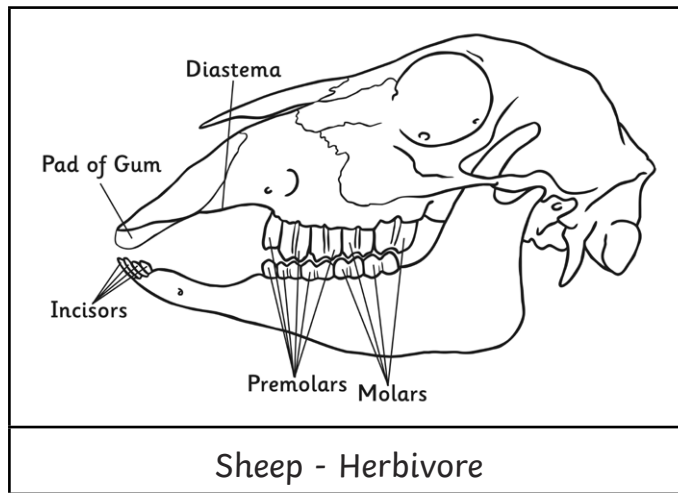


Comparing Animal Teeth

I can identify the types and functions of teeth.

I can identify similarities and differences related to scientific ideas.



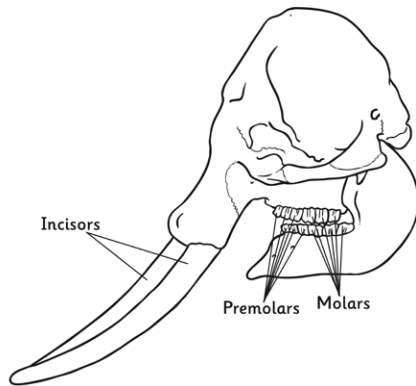
Do all three have any teeth that are the same? Which type of teeth?

Why do you think they have the type of teeth that you stated above in common?

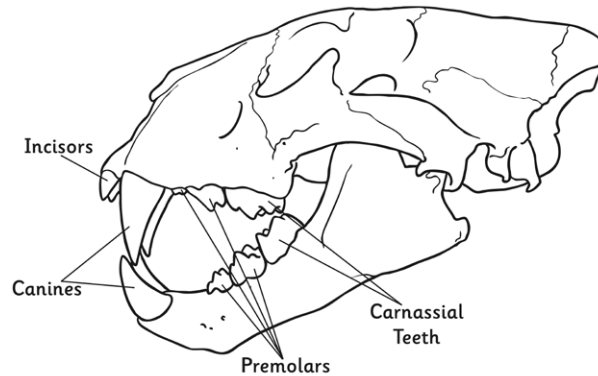
Comparing Animal Teeth

I can identify the types and functions of teeth.

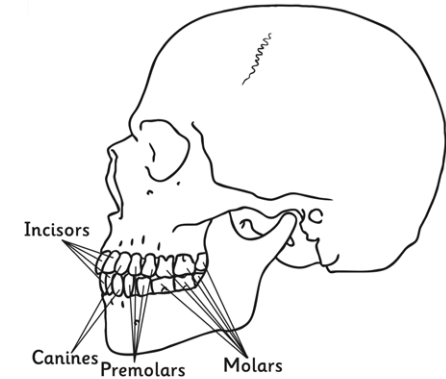
I can identify similarities and differences related to scientific ideas.



Elephant - Herbivore



Lion - Carnivore



Human - Omnivore

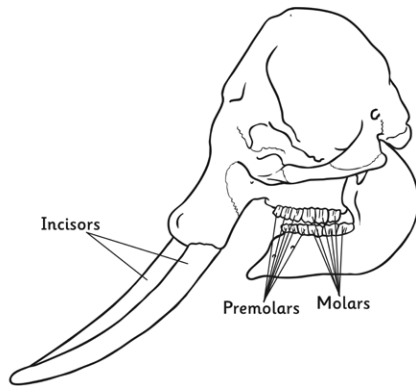
What are the differences in the type of teeth these animals have?

What would happen if the lion had teeth like an elephant?

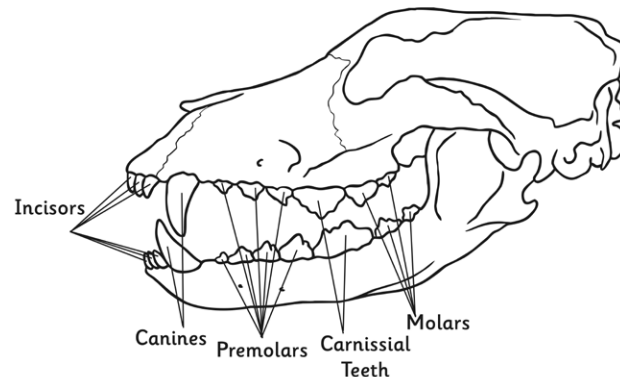
Comparing Animal Teeth

I can identify the types and functions of teeth.

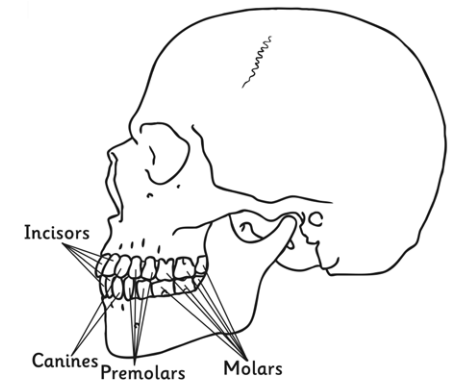
I can identify similarities and differences related to scientific ideas.



Elephant - Herbivore



Dog - Carnivore



Human - Omnivore

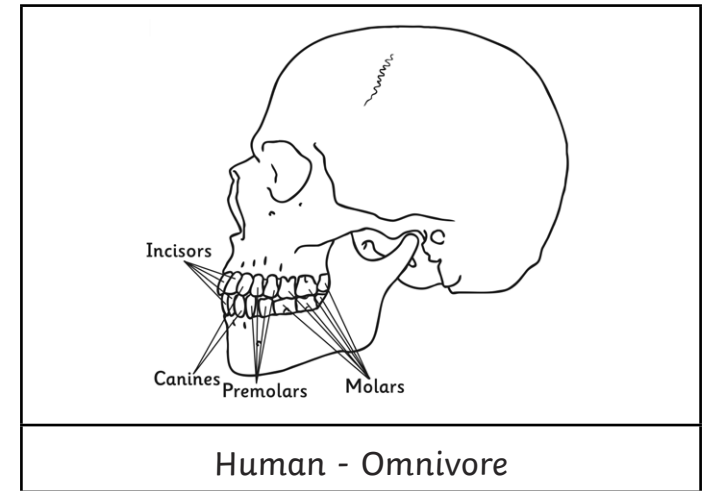
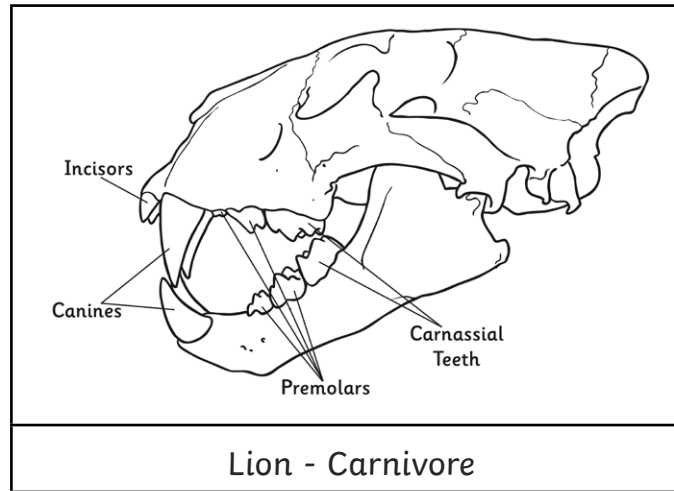
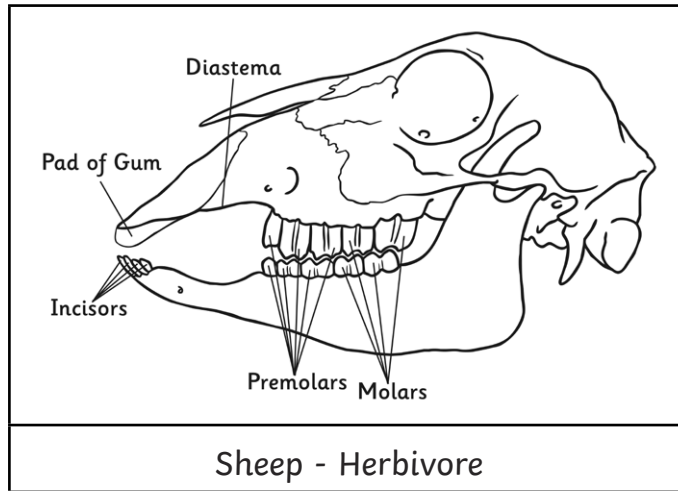
Are there any types of teeth that all three have in common? Why do they have these in common?

Explain any differences that you have found between the types of teeth the animals have:

Comparing Animal Teeth **Answers**

I can identify the types and functions of teeth.

I can identify similarities and differences related to scientific ideas.



Do all three have any teeth that are the same? Which type of teeth?

They all have premolars.

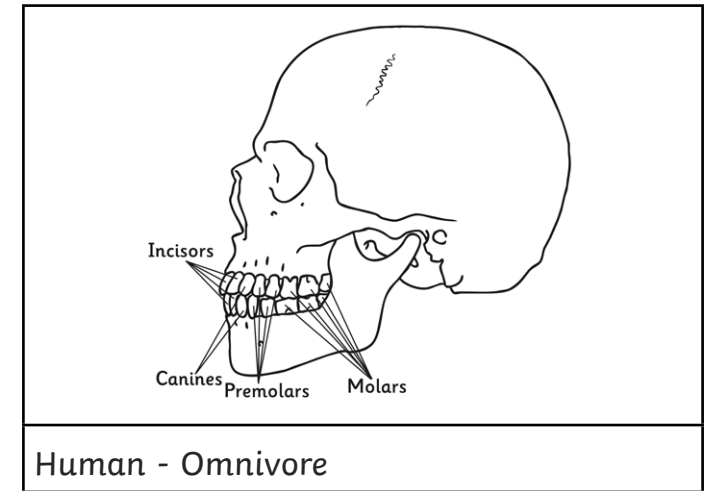
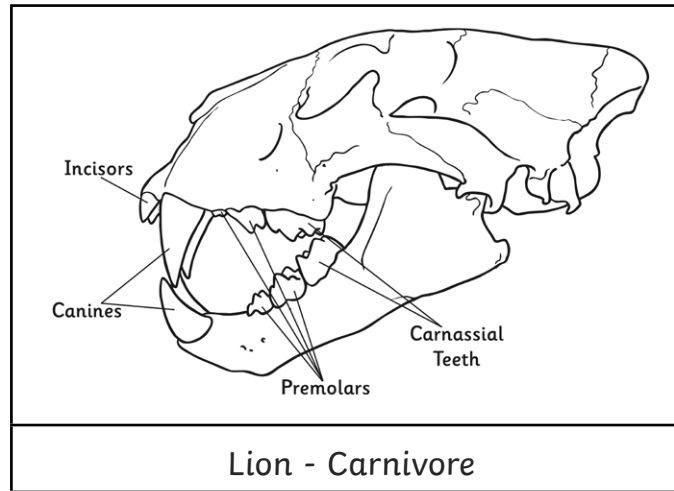
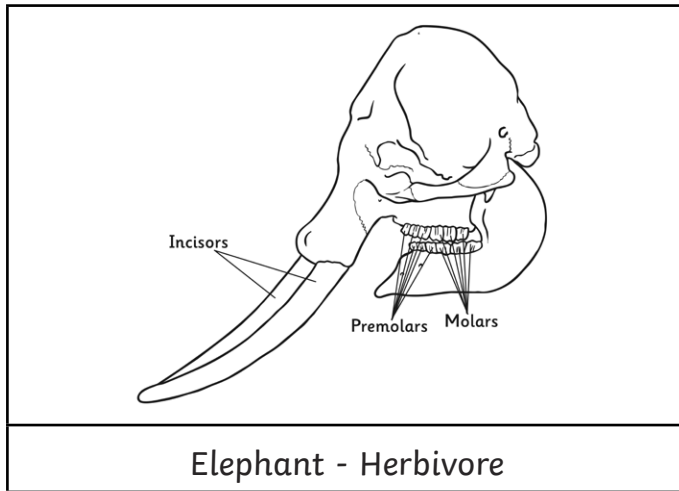
Why do you think they have the type of teeth that you stated above in common?

I think they all have premolars because they all need to hold and crush their food.

Comparing Animal Teeth Answers

I can identify the types and functions of teeth.

I can identify similarities and differences related to scientific ideas.



What are the differences in the type of teeth these animals have?

The elephant has lots of flat molar and premolars for eating its plant diet. The lion has sharp teeth to tear the meat off its prey. Humans have a mixture of sharp and flat teeth as we are omnivores.

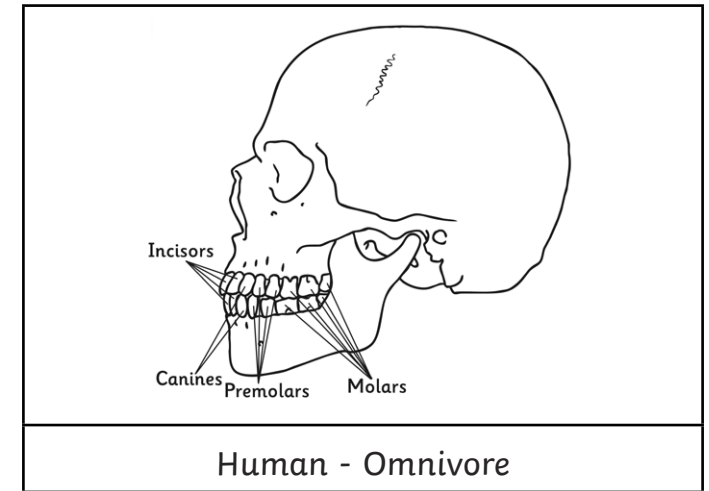
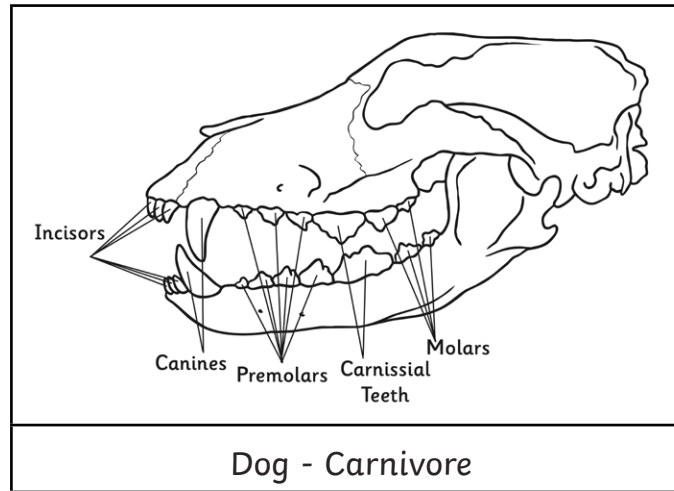
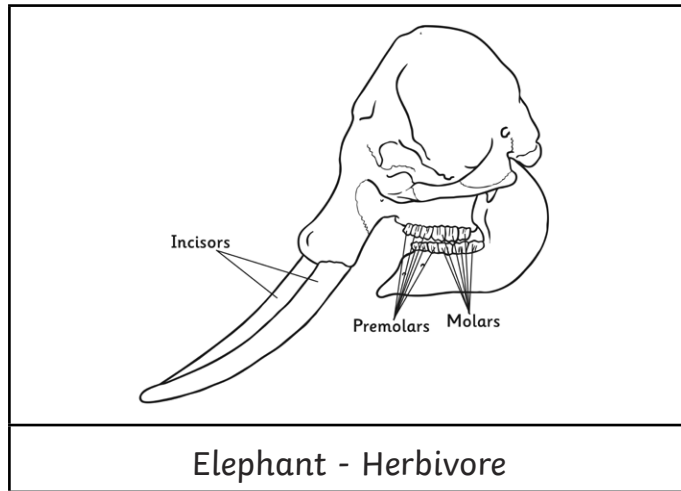
What would happen if the lion had teeth like an elephant?

If the lion had teeth like an elephant, it would not be able to rip and chew the meat off its prey.

Comparing Animal Teeth Answers

I can identify the types and functions of teeth.

I can identify similarities and differences related to scientific ideas.



Are there any types of teeth that all three have in common? Why do they have these in common?

They all have premolars and molars because all 3 animals need to hold and crush their food before swallowing it.

Explain any differences that you have found between the types of teeth the animals have:

The elephant has lots of flat molar and premolars for crushing its plant diet, as well as large incisors that are outside the mouth. The lion has lots of sharp teeth to tear the meat off its prey. The human has a mixture of sharp and flat teeth as we are omnivores.