



# History

Nurturing Nurses



# Nurturing Nurses

# Nurse Comparison



# Aim

- I can compare the lives of different nurses

# Success Criteria

- I can identify similarities between the nurses
- I can identify differences between the nurses

# What does compare mean?



Talk to your partner: What does compare mean?



# Similarities and Differences



Talk to a partner:

1. Can you think of any similarities between Florence Nightingale, Mary Seacole and Edith Cavell?
2. Can you think of any differences?



They were all nurses who helped soldiers.



Two nurses in the Crimean War and one in World War One.

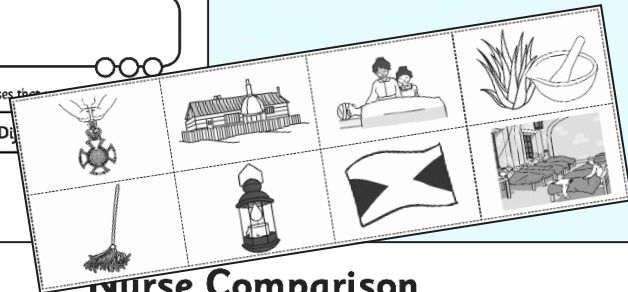
# Nurse Comparison



## Nurse Comparison

Write down all the similarities and differences between the nurses that you have studied.

Similarities	Differences



## Nurse Comparison

Can you sort these pictures? Why are they important?

Florence Nightingale	Mary Seacole

# What have we found out?



- How did you sort the pictures?
- Why are the pictures important?
- What similarities did you find?
- What differences did you find?



# Nurses Today

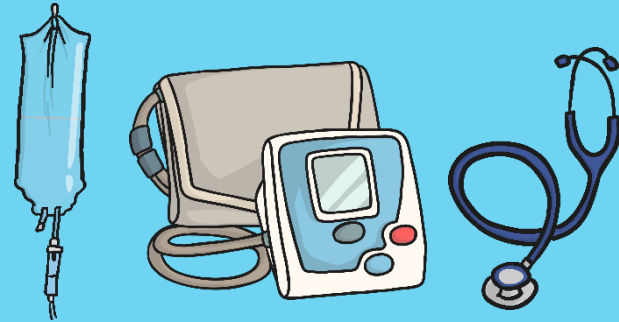


How do Florence Nightingale, Mary Seacole and Edith Cavell compare with nurses today?

Where do nurses work today?



How do they help people?



Do nurses from the UK go to work in any other countries?



Are there any special hospitals for injured soldiers?

Where are they?





# Aim



- I can compare the lives of different nurses

# Success Criteria

- I can identify similarities between the nurses
- I can identify differences between the nurses

